

temperature controlled units

Information document for temperature controlled units, featuring **drawings, dimensions** and **product specification**.

bespoke solutions

whatever the business

Every project we take on needs to be commercially viable, so we work in partnership with our clients to develop bespoke solutions to meet all of their needs. We help resolve critical issues rather than just increasing storage space. However, that doesn't mean we can't supply simple, single units that benefits our clients.

product specification



three pallet wide

Internal width allows you to introduce stock picking and the capability for stock rotation.



alarms & alerts

Alarms and alerts to notify you of any temperature or power failure installed as standard.



data logger

Track the temperature within the unit as a safe guard to your product integrity.



linked option

Linking our units to an existing facility can help improve process flow.



non slip floors

High-grit covered floors ensure that any staff working in the unit are safe.



300 lux lighting

LED Lighting is used at 300 lux to create a brightness similar to day light.



100mm insulation

Standard insulation in all our units to reduce unnecessary heat loss through the walls.



energy efficiency

State of the art energy saving systems to help you save money on your energy.



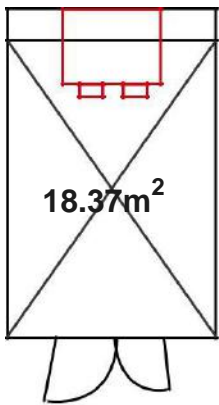
100% backup option

Dual-refrigeration can be incorporated in case one unit fails to ensure 100% backup.

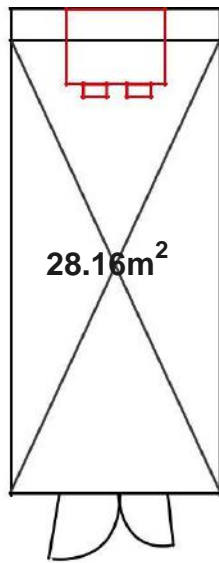
cold store

product range

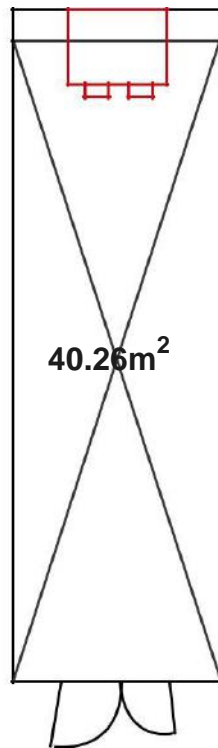
DR14



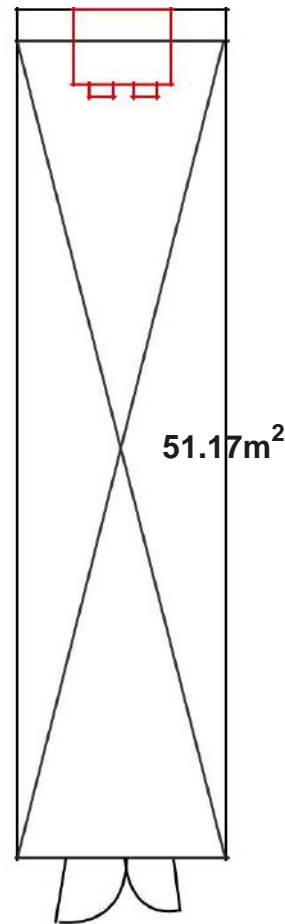
DR20



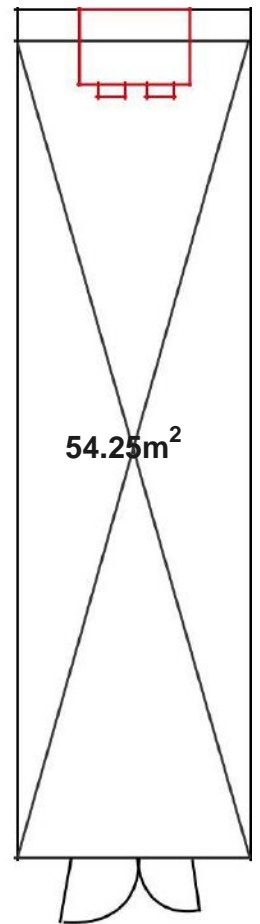
DR31



DR39



DR54



DR14

External Dimensions:	6058 x 3806 x 2880mm
Internal Dimensions:	5096 x 3574 x 2370mm
External Space:	23.06m ²
Internal Space:	18.37m ²
Power Supply:	415V 3ph N+E 32 amp
Energy Usage Chill (kW per hour):	2.7 (based on a zeta)
Energy Usage Freeze (kW per hour):	5.57 (based on zeta)
Pallet Capacity (UK and EU):	14 UK 16 EU

DR20

External Dimensions:	8822 x 3806 x 2847mm
Internal Dimensions:	7791 x 3574 x 2370mm
External Space:	33.38m ²
Internal Space:	28.16m ²
Power Supply:	415V 3ph N+E 32 amp
Energy Usage Chill (kW per hour):	2.7 (based on a zeta)
Energy Usage Freeze (kW per hour):	5.57 (based on zeta)
Pallet Capacity (UK & EU):	20 UK 24 EU

DR31

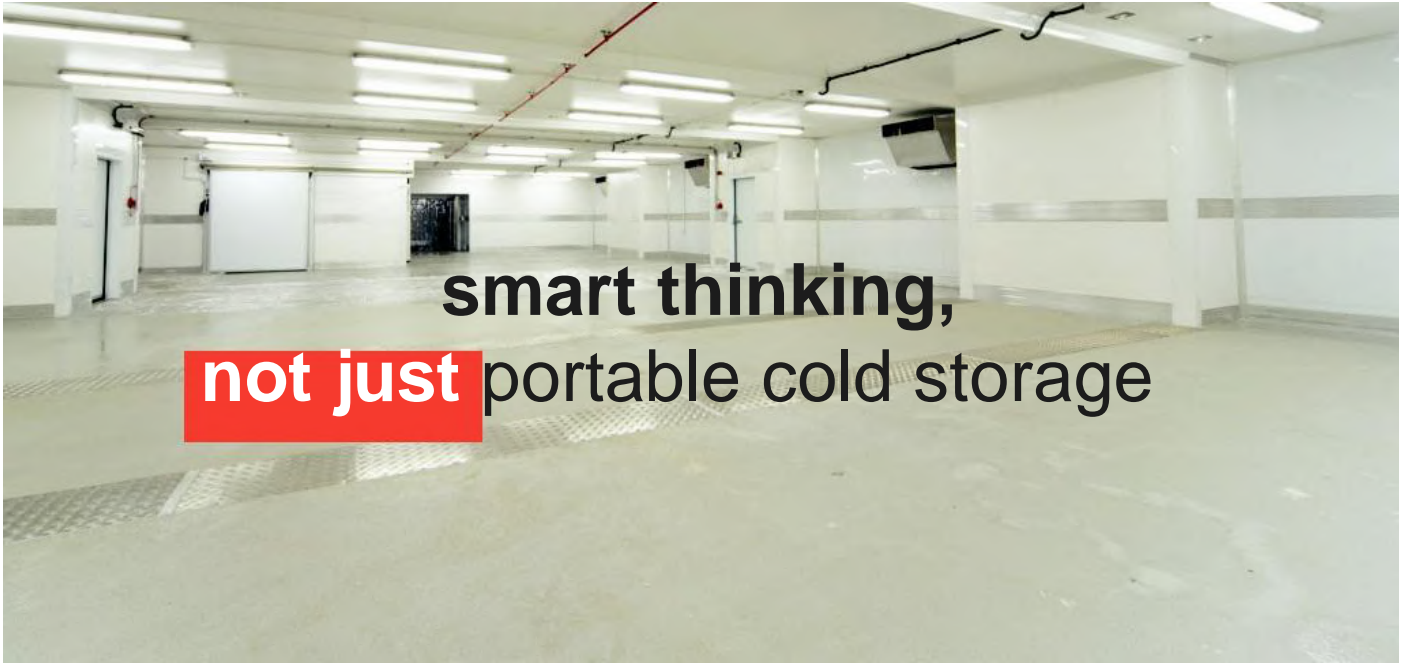
External Dimensions:	12192 x 3806 x 2853mm
Internal Dimensions:	11166 x 3574 x 2370mm
External Space:	46.4m ²
Internal Space:	40.26m ²
Power Supply:	415V 3ph N+E 32 amp
Energy Usage Chill (kW per hour):	2.7 (based on a zeta)
Energy Usage Freeze (kW per hour):	5.57 (based on zeta)
Pallet Capacity (UK & EU):	31 UK 36 EU

DR39

External Dimensions:	15240 x 3806 x 2856mm
Internal Dimensions :	14210 x 3574 x 2370mm
External Space:	58m ²
Internal Space:	51.17m ²
Power Supply:	415V 3ph N+E 32 amp
Energy Usage Chill (kW per hour):	2.95 (based on a sigma)
Energy Usage Freeze (kW per hour):	6.07 (based on a sigma)
Pallet Capacity (UK & EU):	39 UK 44 EU

DR54

External Dimensions:	15240 x 4050 x 2880mm
Internal Dimensions :	14277 x 3800 x 2370mm
External Space:	61.72m ²
Internal Space:	54.25m ²
Power Supply:	415V 3ph N+E 32 amp
Energy Usage Chill (kW per hour):	2.95 (based on a sigma)
Energy Usage Freeze (kW per hour):	6.07 (based on a sigma)
Pallet Capacity (UK & EU):	42 UK 51 EU



smart thinking,
not just portable cold storage

innovating fast

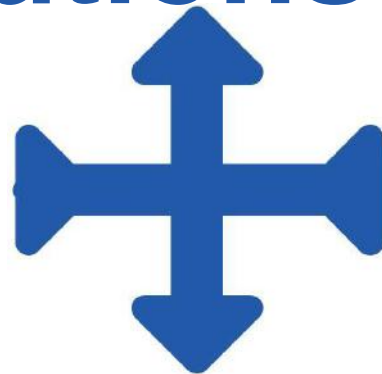
flexible solutions



linked complex

We can create bespoke solutions, tailored to your specific needs, whether that be by creating **linked units** that have more capacity than individual units or by creating large, **open plan production areas**.

- link refrigerated units together
- increase temperature controlled space, fast
- quick, flexible, low cost expansion



cross-docking

Cross-docking is a great way to improve process flow within a factory. It allows you to receive materials and load product in a process orientated area, benefiting **productivity** and your **cold chain**.

- less time spent moving products/materials
- increase time spent producing
- improve quality of operations and productivity



smart thinking,
not just a hole in a wall

improving

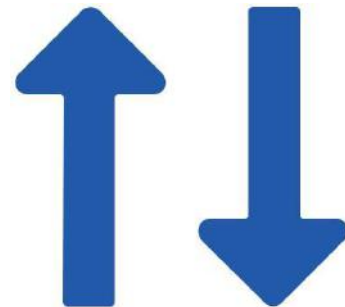
productivity



link to your facility

A hole in a wall used in a smart way can have profound impact on your production set-up, **cold chain management and productivity.**

- link refrigerated units to your facility
- cold chain improvements
- quick, flexible, low cost expansion
- can be situated in advantageous positions



process flow

When units are situated in prime locations, it can be connected to production lines, allowing products to be **moved more effectively.**

- less time spent moving products/materials
- increase time spent producing
- free up space by moving storage externally
- stock picking improvements

Dawsongroup | TCS Ireland Ltd.

Unit JB, Beech Avenue
Naas Enterprise Park,
Newhall, Naas
Co. Kildare

www.dawsongroup.ie
contactus@dawsongroup.ie

+353 (0)45 448 810